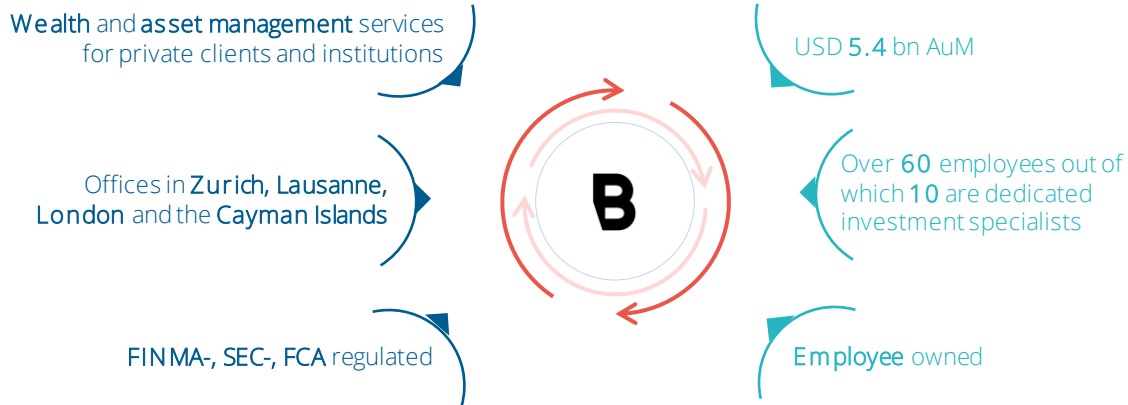
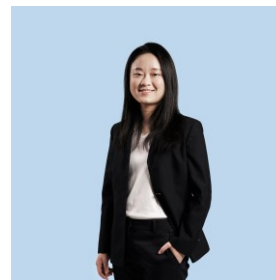
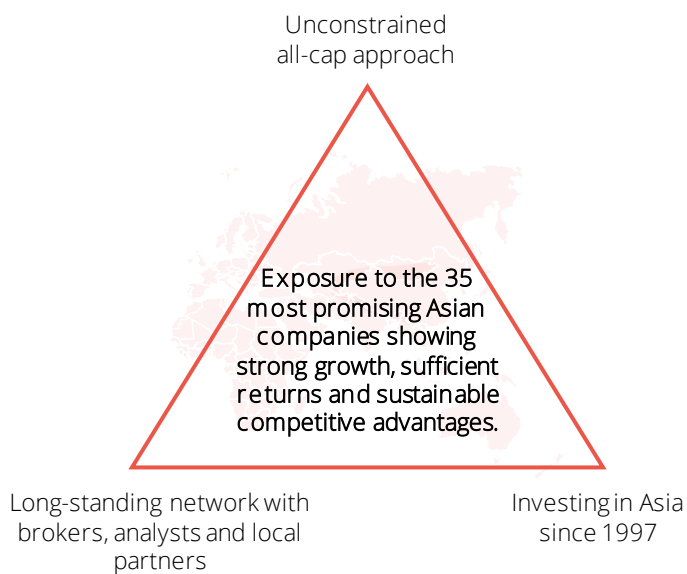


About Bellecapital



Why invest with us?



Xinyue Hou, CAIA
Portfolio manager



Andreas Kringlen, CFA
Portfolio manager

Our portfolio managers boast many years of investment experience in emerging markets and both hold a Master in Banking and Finance from the University of St. Gallen.

Their expertise is complemented by frequent travels to Asia, an extensive network of local sources and our Vietnamese research partner, Endurance Capital.

Why invest in Asia?



High economic growth rates

Asia's GDP grew by 5.3% in 2024 and is projected to grow by 5.0% in 2025.



Demographic advantages

Asia's median age is 32.1 with a population of 4.8 bn (59% of the world population).



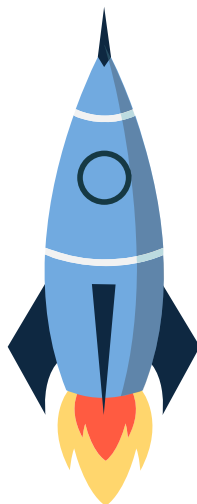
Rising middle class

The middle-class population in Asia is expected to increase from 1.38 billion people in 2015 to 3.49 billion people by 2030.



Rapid urbanization

East Asia is the world's most rapidly urbanizing region with an average annual urbanization growth rate >0.5%.



Why invest in Asian companies?

Local understanding

Many Asian companies have a deeper understanding of local client segments and markets, allowing them to leverage this insight across the entire value chain for a competitive advantage.

01

Undervalued opportunities

Many Asian stocks trade at lower valuations than their Western counterparts, despite strong fundamentals.

02

Innovation and technology leadership

Countries such as China, South Korea and Taiwan dominate in semiconductors, AI and EV technology.

03

For marketing and information purposes by Bellecapital AG: The Galileo - Asia Fund is a UCITS fund under Luxembourg law in the category "Securities Fund". The fund may not be marketed, either directly or indirectly in the United States of America or be sold to US persons. The information in this document is given for information purposes only and does not qualify as an offer or as investment advice. No liability is assumed for the accuracy and completeness of the information. Opinions and assessments contained in this document may change and reflect the point of view of Bellecapital AG in the current economic environment. This document qualifies as marketing material. Investments should only be made after a thorough reading of the current prospectus and/or the fund regulations, the Key Investor Information (KID), the current annual and semi-annual reports (the "legal documents"), as well as after consulting an independent finance specialist. Investments come with various risks. Detailed references to opportunities and risks can be accessed in the current prospectus. Moreover, Bellecapital AG strongly recommends that potential investors consult a tax specialist regarding the consequences of investments in the specific legislation of their tax liability. All documents are available in German on the website of IPConcept (fund administrator, https://www.ipconcept.com/ipc/en/funds_overview.html). The fund administrator may de-notify arrangements made for marketing as regards units, including, where relevant, in respect of share classes, in a Member State in respect of which it has made a notification, in accordance with Article 93a of guideline 2009/65/EC and Article 32a of guideline 2011/61/EU. A summary of investor rights can be found in German on <https://www.ipconcept.com/ipc/de/anlegerinformation.html> or in English on <https://www.ipconcept.com/ipc/en/investor-information.html?rdeLocaleAttr=en>). The performance of past values and returns is no indicator of their current or future development. The performance of values and returns does not include the fees and costs which may be charged when buying, selling and/or switching units. This document is being provided to you in response to your specific request for information. Distributions of this document or disclosure of its contents to any person other than your advisors or representatives is prohibited.